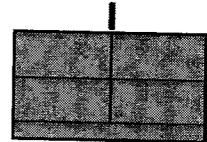


MEDICAL LOGISTICS COMPANY



SIC	TITLE	REQ OP	REQ WO	REQ ENL	REQ CIV	REQ OT
08480K000	MEDICAL LOGISTICS COMPANY	2	1	67	0	70
08487KA00	MEDICAL LOGISTICS COMPANY (BASE)	1	1	43	0	45
08487KB00	MED LOG CO (EARLY ENTRY TEAM)	1	0	6	0	7
08487KC00	MED LOG CO (CONTACT REPAIR TEAM)	0	0	9	0	9
08487KD00	MED LOG CO (FORWARD DISTRIBUTION TEAM)	0	0	9	0	9

MISSION

To provide Class VIII support, optical lens fabrication and repair, and medical equipment maintenance and repair for the BCT and EAB units, to include augmented support to the field hospital.

ASSIGNMENT

Assigned to a higher-level medical element, usually the HHD MMB.

DEPENDENCIES

HHD, MMB for appropriate elements of the MEDBDE [SPT] for AHS support, transportation, power generator maintenance support, religious, legal finance, personnel and administrative services, automation and technical intelligence for captured medical materiel and communications maintenance support. The base and early entry team have 30 percent mobility and are dependent on transportation for movement. The MLC will be dependent on transportation organization for movement of all equipment and delivery of Class VIII supplies.

Unit to which assigned or attached for food service support.

Quartermaster field service company (modular) for shower and laundry support in support for divisional and nondivisional troops.

EMPLOYMENT

The company will normally be under the mission command of the MMB, forming the MEDLOG company base for the AOR.

BASIS OF ALLOCATION

One per 13 short tons of Class VIII supplies processed per day.

CAPABILITIES

This unit—

- Provides 220 hours per day of field level medical equipment maintenance and repair.
- Provides Class VIII support, optical lens fabrication and repair, and medical equipment maintenance and repair support.
- The receive and storage sections, shipping section and the stock control section can process up to 9 short tons of Class VIII supplies per day.
- Coordinates for emergency delivery of Class VIII supplies.
- Provides field and limited sustainment medical equipment maintenance and repair, scheduled services support, repair parts, and Medical Standby Equipment Program items for medical units operating within the theater AOR, to include unified action partners, when directed.
- Can coordinate for higher priority delivery of Class VIII supplies.

- Can build and position preconfigured push-packages, as required, in support of brigade and below and EAB units.
- The optical section can provide single and multi-vision optical lens fabrication and repair to support a maximum force of 22,000 troops.
- Can provide the distribution capability for a theater lead agent for medical materiel when required.
- Can provide organic unit maintenance.
- Provides one early entry team, three contact repair teams, and three forward distribution teams, who can process up to 4 short tons Class VIII per day.
- Quantities designate the minimum essential wartime requirement for personnel and equipment.
- For unit maintenance capability, see the section I of each subordinate TOE.

FUNCTIONS

Company Headquarters

Provides unit-level administration, general supply, arms maintenance, as well as CBRN operations support. Personnel of this section supervise unit operations, general supply and communications. During the development of the theater, or during other operations, the MLC can be self-sustaining for short periods of time (72-hours).

Logistics Support Platoon Headquarters

This section is responsible for ensuring that stocks remain in an issuable condition while in storage. This includes the prior planning of receipt of supplies, locating stocks in a way that provides for first-in/first-out handling, utilizing space efficiently and maintaining segregation and disposition of stock as determined by the accountable officer/platoon leader. The Logistics Support Platoon is composed of a headquarters, receive/storage section, shipping section and stock control section.

Logistics Support Section

This section can receive and position pre-configured push packages until normal automated requisition flow is established. This team will have the ability to handle higher priority resupply for specific line item requisitioning of medical supplies and equipment (as required) out of its authorized stockage list in support of medical units deployed to the area of responsibility. The team will provide in-transit visibility of Class VIII supplies. The early entry logistics support personnel will reintegrate with the Receive/Storage Section and the medical maintenance personnel will reintegrate with the Biomedical Maintenance Section once the base is deployed.

Receive/Storage Section

This section is responsible for preparing and processing receipt documents for incoming shipments. This section is also responsible for the storage, preservation, location, and accountability for medical supplies and equipment.

Shipping Section

This section plans for release of materiel to transportation, coordinates for vehicles, stages shipments for pick-up, and prepares movement documents.

Stock Control Section

This section coordinates all stock control functions. Also maintains accountability for all Class VIII materiel received, stored and issued in the MLC.

Optical Section

This section performs optical lens fabrication and repair of single and multi-vision prescription lenses and military combat eye protection lenses and inserts to support a maximum force of 22,000 troops.

Maintenance Platoon Headquarters

This headquarters is responsible for field and limited sustainment medical equipment maintenance and repair. This platoon is composed of two elements: the biomedical maintenance section and the organizational maintenance section. This platoon is responsible for field level maintenance of organization equipment.

Biomedical Maintenance Section

This section performs field and limited sustainment medical maintenance and repair. It also performs field maintenance for units in its area of operations that do not have organic medical equipment maintenance; personnel assigned.

Biomedical Maintenance Team

This team will establish and track medical equipment density and schedule service information from the Logistics Information Warehouse for all medical units during theater opening operations. The Biomedical Maintenance Team will provide limited medical standby equipment utilizing regeneration enablers and field level repair upon request.

Organizational Maintenance Section

This section is responsible for vehicle maintenance, equipment records and repair parts, fuel distribution, power generation repair, refrigeration and automation systems repair.

Contact Repair Teams

These teams can be rapidly deployed to provide medical equipment maintenance and repair. The contact repair teams can augment any medical organization to include Joint or multinational partners and can collocate with the BSMC if that medical company is collocated with an FST/FRST. The contact repair teams are designed to operate at EAB and go far-forward into the brigade area. This section can deploy three contact repair teams, which is identified under SRC 08487KC00. The contact repair teams will consist of three personnel each. These teams will provide field and level maintenance and repair support to all medical units within their AOR. The contact repair teams will be employed by the MMB based on Mission Enemy Terrain Troops - Time and Civil considerations data, or by the request of the brigade surgeon to the MMB. The contact repair teams will deploy to medical units, to include all units within the BCT that have organic medical equipment. The teams will bring limited repair parts and Medical Standby Equipment Program capabilities. While these teams are employed forward, they will technically inspect all medical equipment within their area as proactive maintenance measures.

Forward Distribution Teams

These teams receive and process supplies at strategic air and sea hubs in theater, facilitating medical materiel movement.

MOBILITY

This unit requires 30 percent mobility of its TOE equipment to be transported in a single lift using its organic vehicles.

Contact Repair and Forward Distribution Teams are 100 percent mobile and are able to transport all of its TOE equipment in a single lift using organic vehicles.

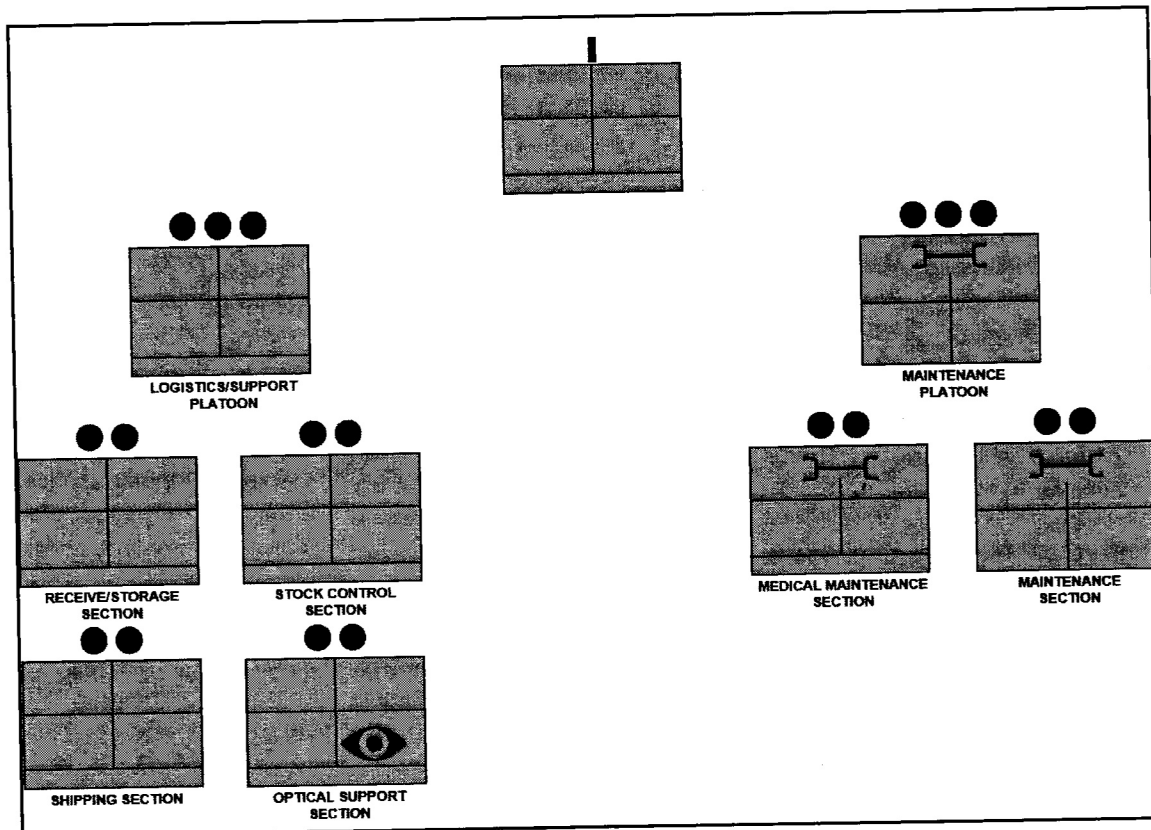


Figure 3-28. Medical Logistics Company