

## Chapter 2

# Medical Logistics Organizational Structure

The MEDLOG support structure must provide the medical materiel necessary to ensure quality care in any operational environment. It is important for medical planners and logisticians to be familiar with the organizational structure and capabilities of units in the force. This chapter describes the structure of the MEDLOG organizations resident in the operating force to include the mission, capabilities, and dependencies of each unit.

### SECTION I — THEATER MEDICAL LOGISTICS SUPPORT

2-1. Theater MEDLOG operations require thorough planning and execution to ensure sustainment of supported units. In theater, Army MEDLOG is planned and executed as part of the combatant commander and ASCC medical support plan and must be structured and managed to be responsive to health care requirements as part of an integrated jointly operating AHS.

2-2. The commander prioritizes the mix of forces based on the time-phased force and deployment data. The time-phased force and deployment data must incorporate detailed MEDLOG planning to ensure that the logistics infrastructure supports austere and mature theater requirements by synchronizing force deployments with functional MEDLOG units and resources prior to operations. Active and continuous command involvement in all stages of force projection, coupled with detailed reversed planning, combine to ensure that the right forces with the right support are available and ready to conduct operations.

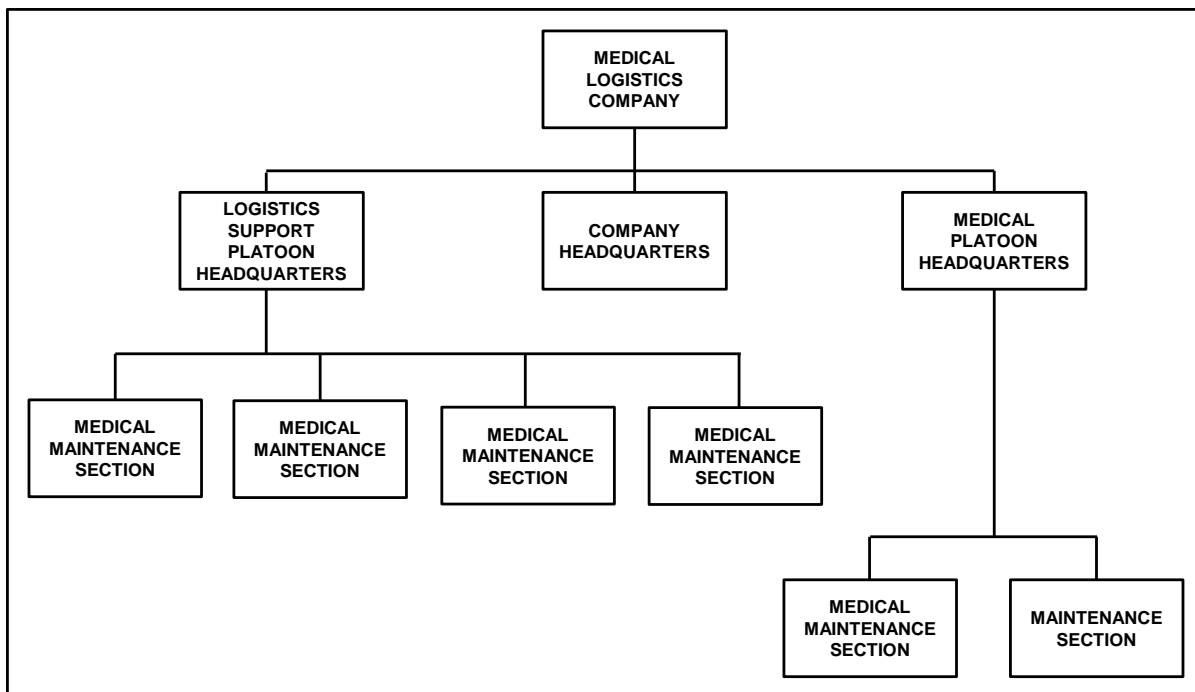
### SECTION II — MEDICAL LOGISTICS SUPPORT ORGANIZATIONS IN THE OPERATING FORCE

2-3. Medical logistics is anticipatory with select units capable of operating in a split-based mode. Medical logistics is provided by a combination of the following organizations:

- Medical logistics company.
- Logistics support company.
- Medical detachment (blood support).
- Optometry detachment (organizational structure and functions covered in Chapter 6).
- Medical logistics management center.

### MEDICAL LOGISTICS COMPANY

2-4. The mission of the MLC (Table of Organization and Equipment [TOE] 08488R000) is to provide direct support for medical materiel, medical equipment maintenance, and single and multivision optical lens fabrication and repair to BCTs and EAB medical units. The MLC has no organic blood support capability. Figure 2-1 on page 2-2 depicts the organizational structure of the MLC.



**Figure 2-1. Medical logistics company**

2-5. The MLC is assigned to the medical battalion (multifunctional) (MMB) or senior medical mission command headquarters within the area of operations. The company has the capability for limited self-sustainment during initial operations, meeting the requirement for early entry into the area of operations or as part of a task organization and is dependent on—

- Appropriate elements of the theater for religious, legal, AHS support, financial management, personnel and other administrative services.
- Unit to which it is assigned for food service support.
- The headquarters and headquarters detachment of the MMB for communications maintenance support.

## CAPABILITY

2-6. One MLC is allocated per 11.1 short tons of Class VIII issued per day. The MLC—

- Provides Class VIII, single and multivision optical fabrication and repair, and medical equipment maintenance support to a maximum force of 22,000 Soldiers.
- Receives, classifies, and issues up to 11.1 short tons of Class VIII supplies per day.
- Provides storage for up to 51 short tons of Class VIII supplies.
- Builds and positions Class VIII configured loads, as required in support of BCTs and EAB medical units or contingencies.
- Provides field- and sustainment-level medical equipment maintenance for medical equipment belonging to medical units operating within the supported area and is capable of deploying three mobile medical maintenance support teams.
- Provides reconstitution of MEDLOG units, sections, or teams.
- Coordinates for emergency delivery of Class VIII supplies.
- Provides field maintenance on all organic unit equipment except communications security equipment.
- Fulfills the SIMLM supply and requisition processing mission for all joint forces in the theater, when so designated by the combatant commander.

## **ORGANIZATIONAL STRUCTURE**

2-7. The MLC consists of the company headquarters, logistics support platoon headquarters, and maintenance platoon headquarters.

### **Company Headquarters**

2-8. The company headquarters provides mission command of the MLC. Personnel assigned to this section supervise and perform unit plans, operations, and general supply functions.

### **Logistics Support Platoon Headquarters**

2-9. The logistics support platoon headquarters provides mission command of the platoon. The platoon headquarters is responsible for ensuring that stocks remain in an issuable condition while in storage. This includes the planning prior to receipt of supplies, locating stocks, ensuring first-in/first-out handling, using space efficiently, and maintaining segregation and disposition of stock as determined by the accountable officer.

#### ***Receiving and Storage Section***

2-10. This section is responsible for the storage, preservation, location, and accountability for medical supplies and equipment. The section prepares and processes receipt documents for incoming shipments and is capable of deploying a five person mobile forward distribution team for dual-based operations.

#### ***Shipping Section***

2-11. This section plans for the release of materiel to transportation, coordinates for vehicles, stages shipments for pick up, and prepares movement documents. This section maintains close communication and synchronization with the distribution management center (DMC) of the theater sustainment command/expeditionary sustainment command, the supported brigade medical supply office (BMSO), and the brigade support battalion support operations section for distribution management in order to use theater transportation assets to deliver supplies. This section is capable of deploying a five-person mobile forward distribution team for dual-based operations.

#### ***Stock Control Section***

2-12. This section maintains accountability for all medical materiel and coordinates all stock control functions. The section also maintains accountability for all materiel received, stored, and issued in the MLC. This section is capable of deploying a three-person mobile forward distribution team in support of dual-based operations.

#### ***Optical Support Section***

2-13. The optical support section performs optical fabrication and repair of single and multivision eyewear.

### **Maintenance Platoon Headquarters**

2-14. The maintenance platoon headquarters provides mission command for the platoon. The platoon headquarters also oversees the performance of field and sustainment medical equipment maintenance services on an area basis. The platoon also provides oversight of organizational maintenance for all vehicles and power generation equipment organic to the company.

#### ***Medical Maintenance Section***

2-15. This section performs limited sustainment maintenance services to all units within the company's area of operations. It also performs field maintenance for units in its area of operations that do not have organic medical equipment maintenance personnel assigned or attached or are not supported by biomedical equipment specialists from other units. This section can deploy three mobile contact repair teams.

### Maintenance Section

2-16. This section is responsible for vehicle maintenance, equipment records and repair parts, unit fuel distribution, and power generation repair for organic company assets.

## LOGISTICS SUPPORT COMPANY

2-17. The mission of the logistics support company (TOE 08497R000) (Figure 2-2 below) is to provide direct support for Class VIII materiel, medical equipment maintenance and repair, and single and multivision optical lens fabrication and repair to EAB medical units operating within the supported area. It also provides backup support to the MLC (TOE 08488R000). The logistics support company is assigned to the MMB.

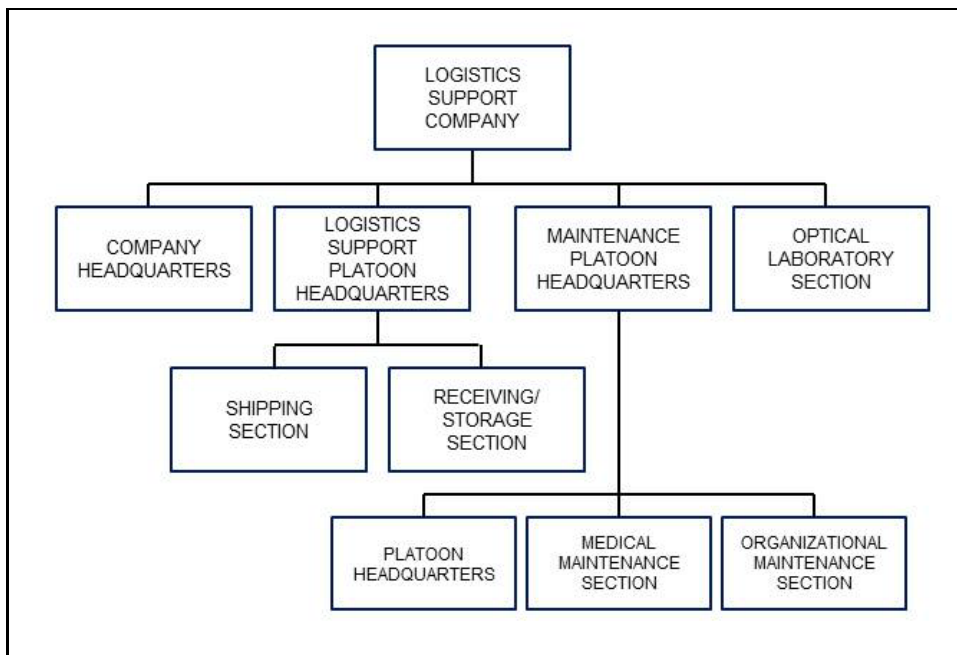


Figure 2-2. Logistics support company

### CAPABILITY

2-18. The company is capable of receiving, classifying, and issuing up to 24 short tons of medical supplies per day and storage for up to 415 short tons of Class VIII supplies. The logistics support company also—

- Builds and pre-positions medical resupply sets from components assembled in CONUS in support of brigade and EAB units or contingencies, as required.
- Provides sustainment maintenance for brigade and EAB units operating in the supported area.
- Performs field maintenance for the medical detachment (blood support) and units operating in the area that do not have organic biomedical equipment specialists assigned.
- Provides reconstitution of MEDLOG units, sections, or teams.
- Coordinates for emergency delivery of Class VIII supplies.
- Performs the theater SIMLM supply and requisition processing mission for all Services, as directed.

### ORGANIZATIONAL STRUCTURE

2-19. The logistics support company consists of a company headquarters, logistics support platoon headquarters, maintenance platoon, and optical laboratory section.